

King's College Hospital in Jeddah - Conference Room

Table of Contents

Cover 1

Table of Contents 2

Images 3

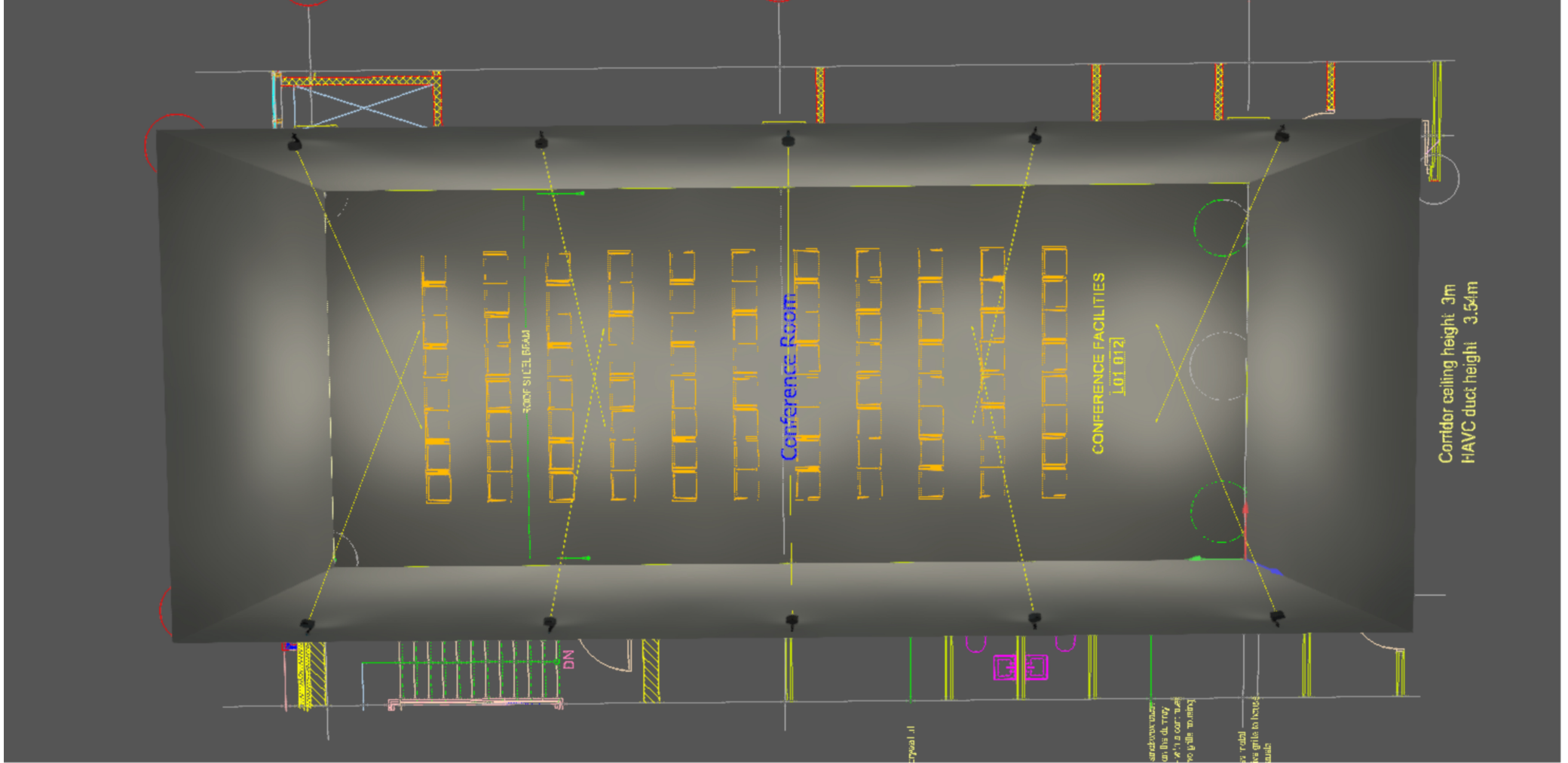
Site 1 - Building 1 - Storey 1

Conference Room

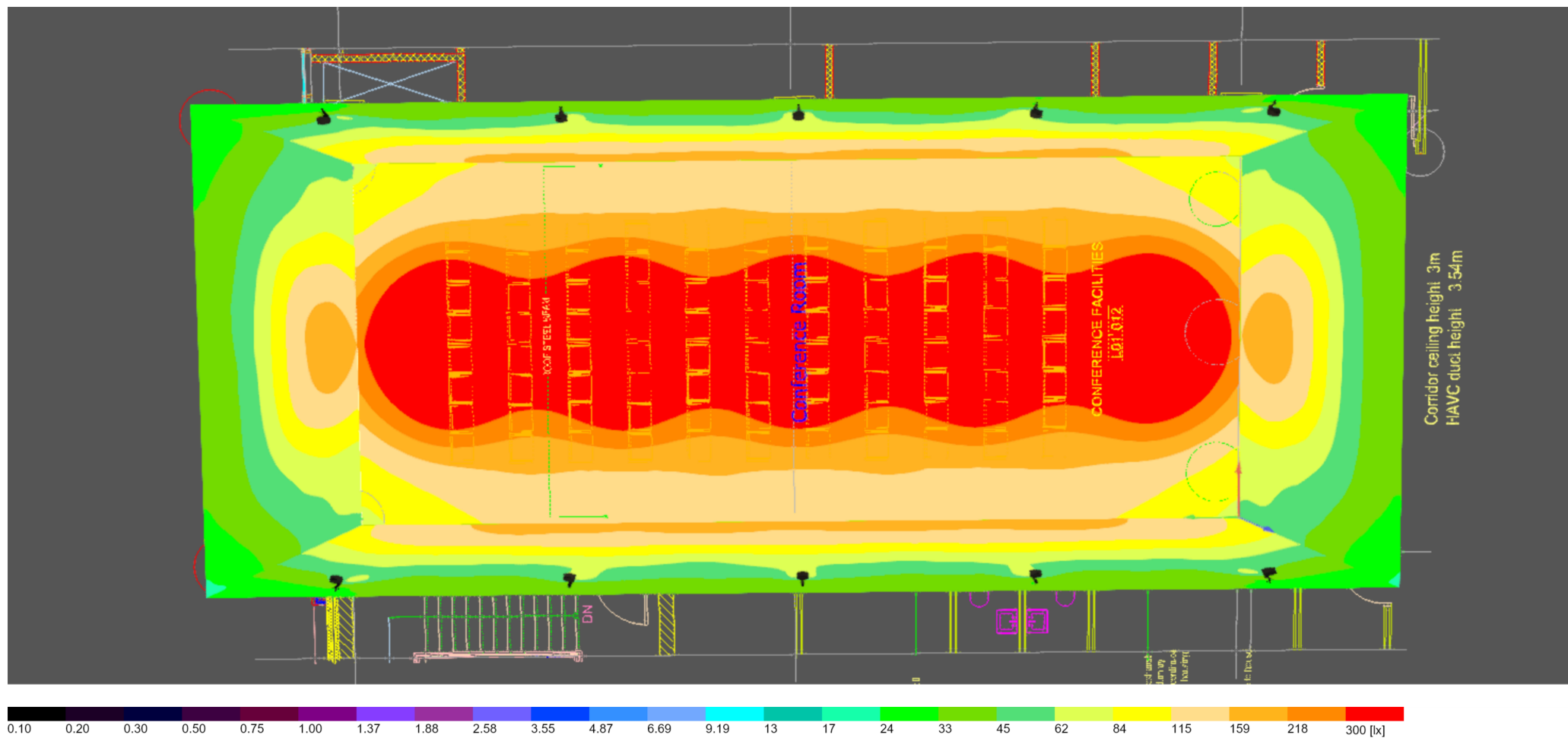
Summary / Light scene 15

Calculation objects / Light scene 1 7

Images

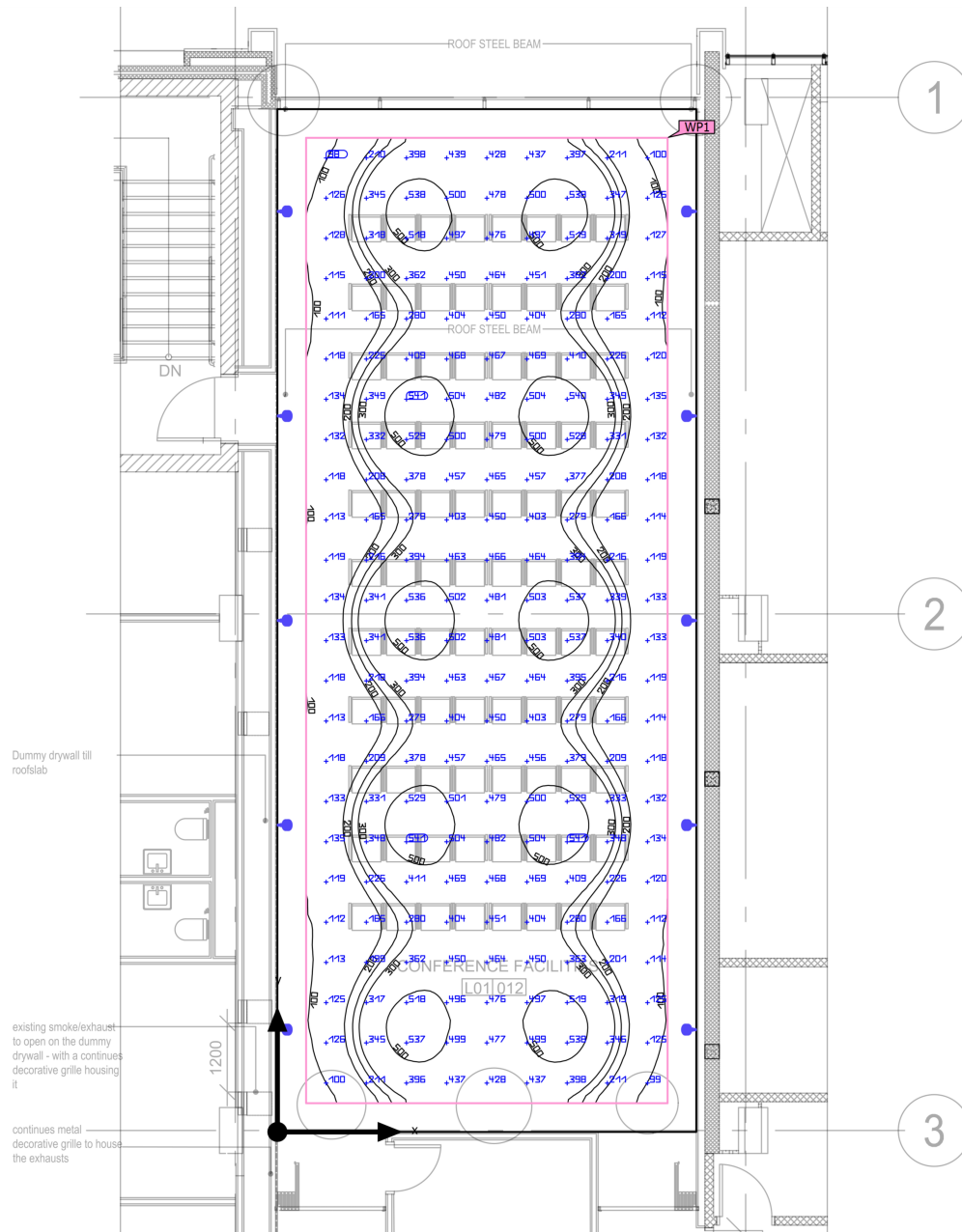


Images



Building 1 · Storey 1 · Conference Room (Light scene 1)

Summary



Ground area	130.02 m ²	Clearance height	4.000 m
Reflection factors	Ceiling: 7.7 %, Walls: 50.0 %, Floor: 20.0 %	Mounting height	3.750 m
Maintenance factor	0.80 (fixed)	Height _{Working plane}	0.800 m
		Wall zone _{Working plane}	0.500 m

Building 1 · Storey 1 · Conference Room (Light scene 1)

Summary

Results

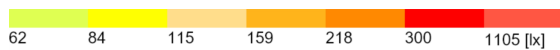
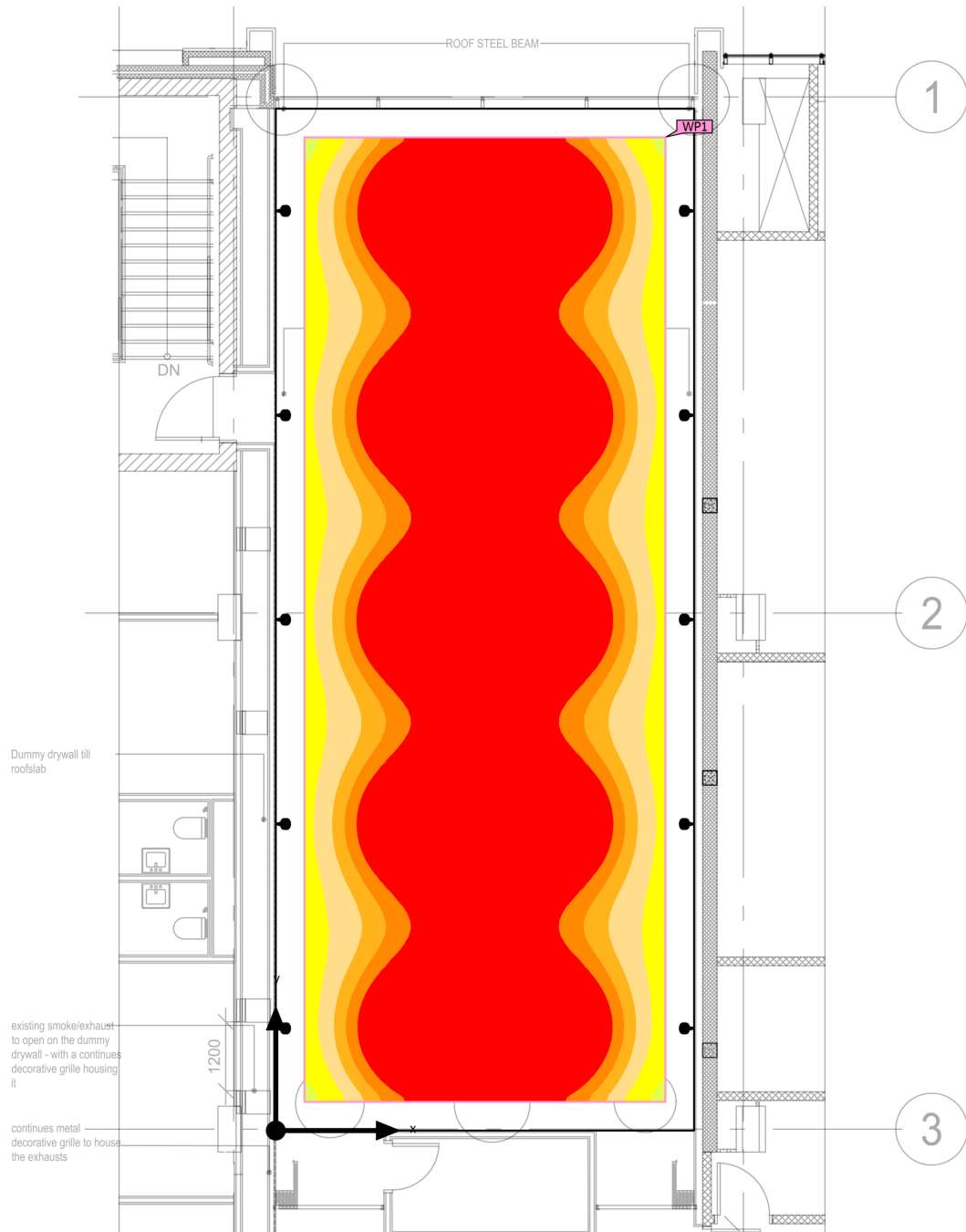
	Symbol	Calculated
Working plane	$\bar{E}_{\text{perpendicular}}$	334 lx
	$U_o (g_1)$	0.23
	Lighting power density	5.19 W/m ²
		1.56 W/m ² /100 lx
Glare valuation ⁽¹⁾	$R_{UG, \max}$	15
Room	Lighting power density	4.23 W/m ²
		1.27 W/m ² /100 lx

(1) Based on a rectangular space of 17.820 m x 7.296 m and SHR of 0.25.

Luminaire list

pcs.	Manufacturer	Article No.	Article name	R_{UG}	P	Φ	Luminous efficacy
10	ERCO	71789000	Parscan Floodlight 1xLED 48.4W neutral white	15	55.0 W	5376 lm	97.7 lm/W

Building 1 · Storey 1 · Conference Room (Light scene 1)

Calculation objects

Building 1 · Storey 1 · Conference Room (Light scene 1)

Calculation objects

Working planes

Properties	\bar{E}	E_{\min}	E_{\max}	$U_o (g_1)$	g_2	Index
Working plane (Conference Room) Perpendicular illuminance (adaptive) Height: 0.800 m, Wall zone: 0.500 m	334 lx	75.2 lx	554 lx	0.23	0.14	WP1

(1) Based on a rectangular space of 17.820 m x 7.296 m and SHR of 0.25.